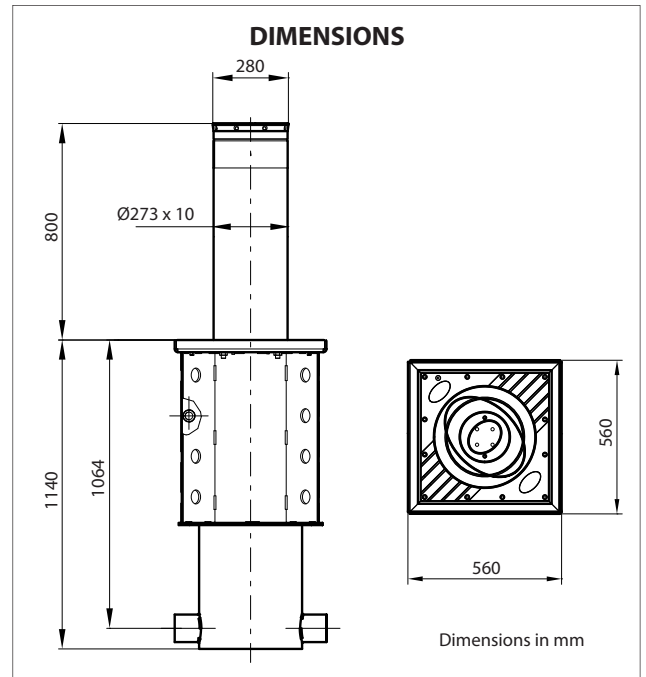
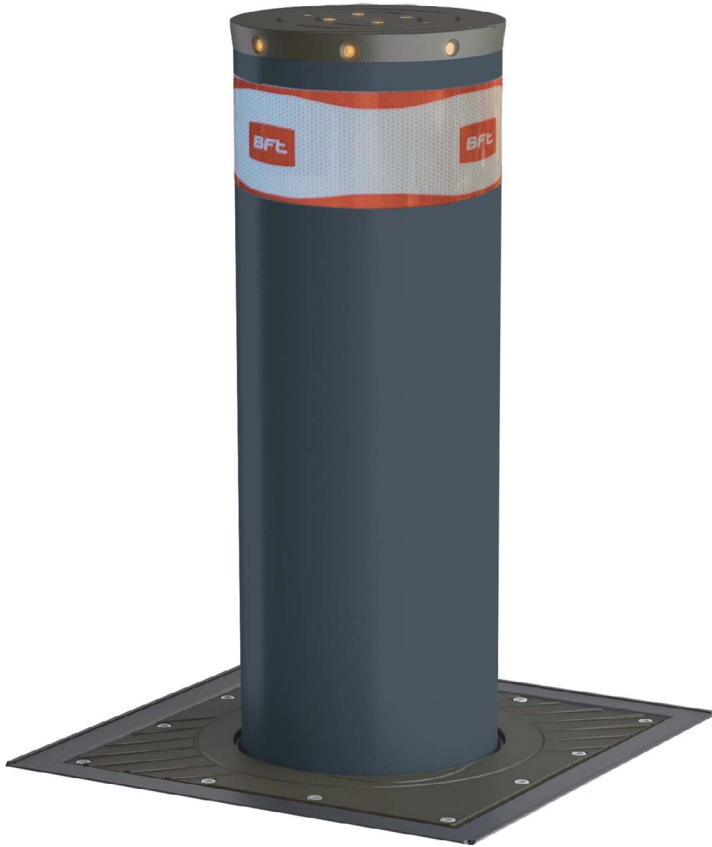


## PRODUCT DATASHEET

# XPASS B 275/800

Anti-terrorism automatic hydraulic bollard

*K4 equivalent antiterrorism bollard, based on dynamic simulation carried out by accredited third-party Laboratory to international standards ASTM2656:2007 M30 - PAS68:2010 7500/50/N2*



- **Automatic hydraulic bollard anti-terrorism protection guaranteed even with SINGLE bollard**

- Independent hydraulic pump for each bollard, access for simplified servicing, protection anti-tampering switch sensor (option)
- Break-in resistance: **667 000 J**
- Work time: rise time: **≤ 7.0 s**; lowering time: **4.0 s**
- Max operating frequency: up to **2 000 op./day**
- MCBF: **3 000 000 cycles**
- Sensors for bollard positions: fully up (PERSEO CBE) and fully retracted (PERSEO CBD, PERSEO CBE)
- Obstacle sensing, configurable (with/without movement inversion)
- Bollard top cover with led lights and buzzer
- Interfaces for remote control (only PERSEO CBE)
- in case of power loss:
  - Standard version: bollard will open.  
Electrical emergency unit for maintaining high stem (optional)
  - Security version: bollard will stay up.  
Lower the bollard by means of a solenoid valve which is accessible from the ground flange.

### REFERENCE STANDARDS

- PAS68:2010 7500/50/N2
- ASTM2656:2007 M30 (sostituisce DoS/DoD K4)
- Machinery directive/Low voltage/Electromagnetic Compatibility
- Radio set (tested with the electronic control unit PERSEO CBD O PERSEO CBE)

| TECHNICAL-ENVIRONMENTAL MAIN FEATURES |  |
|---------------------------------------|--|
| Driven rod out of the ground          | Ø280 x h.800 mm (± 3 mm) x th. 10mm, steel Fe 510 (S 335 JR) *   |
| Buried structure                      | 560 x 560 x h.1140 mm  |
| Foundation                            | Reinforced concrete  |
| Excavation                            | ~1000x1000x1400mm  |
| Break-in resistance                   | 667 000 J  |
| Driven rod treatment                  | Cataphoresis and coating RAL7015 standard, other colour on request   |
| Passive visibility                    | Reflective film H=100 mm **  |
| Flange                                | Cast iron, cataphoresis black  |
| Top cover                             | Cast iron, cataphoresis black  |
| Actuator                              | Hydraulic  |
| Power                                 | 230 Vac ±10%, 50-60 Hz   |
| Working time                          | rise time: ≤ 7.0 s (50 Hz); lowering time: 4.0 s (50 Hz)   |
| Working temperature                   | -40°C *** +60°C  |
| Operating humidity                    | up to 100%   |
| IP grade                              | IP67   |
| Hand operation                        | Interrupting the power off:<br>- Standard version: bollard will open.<br>- Security version: bollard will stay up.<br>Lower the bollard by means of a solenoid valve which is accessible from the ground flange. |
| Weight including packaging            | ~260Kg   |

\* option, AISI304 or AISI316

\*\* Customizable (optional)

\*\*\* With integrated heater active

| ELECTRICAL FEATURES   |   |
|-----------------------|---|
| Control unit          | PERSEO CBD or PERSEO CBE  |
| Power                 | 1-phase 230 Vac ±10%, 50-60 Hz (115 Vac with optional adapter)                                      |
| IP grade              | IP54  |
| Working temperature   | -40°C +60°C   |
| Operating humidity    | up to 95%, non condensing   |
| Use                   | Max. 4 for each control unit. Parallel control wiring possible for driving many groups of bollards. |
| Power absorbed        | 0.55 kW for each bollard  |
| Signalling (optional) | On the top with high intensity LEDs, and buzzer   |
| Sensors               | Open passage, Close passage (PERSEO CBE), Overpressure/Obstacle, Antitampering switch (option)      |
| Local/Remote control  | · Digital inputs<br>· Radio remote control<br>· RS485, TCP/IP (option, PERSEO CBE only)             |

For system composition and installation refer to the regulations in force in the country where the system is being installed.

## ITEM SPECIFICATION

Anti-terror automatic hydraulic bollard K4 equivalent, based on dynamic simulation carried out by accredited third-party Laboratory to international standards ASTM2656:2007 M30 - PAS68:2010 7500/50/N2. Protection guaranteed even with single bollard. Rod dimensions: Ø280x800xth.10mm, steel Fe 510 (S 335 JR). Break-in resistance up to 667 000 Joules. Standard rise time ≤7.0 sec. Lowering time 4.0 sec. IP67. Operating ambient temperature up to -40°C +60°C. Power 1-phase 230 VAC ± 10%, 50-60 Hz. Control unit compatible with RS485 and TCP/IP. Max. 4 bollard for each control unit, with possibility of parallel control wiring to drive many groups of bollards. Power consumption 0.55kW for each bollard. Independent hydraulic pump for each bollard: in case of pump failure, the other bollards keep working. Easy access to hydraulic pump for simplified service. Obstacle detection, configurable (with/without movement inversion). Available in two versions:

- 1) Standard: bollard will open in case of power loss;
- 2) Security: bollard will stay up even in case of power loss. It is possible to lower the bollard by means of a security mechanical key. Lower the bollard by means of a solenoid valve which is accessible from the ground flange.



**Expert Security UK**  
Unit 1 Lowercroft Business Park  
Lowercroft Road, Bury, BL8 3PA  
0800 211 8413  
www.expertsecurityuk.co.uk